



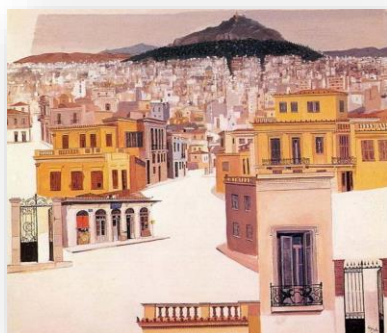
**NEOHEL**  
MODERN GREEK & EUROPEAN STUDIES  
PUBLICATIONS

## Modern Greek Language & Culture Course (MG102 - 103) Combine holidays & learning

### a. Summer course in Athens MG102

**Start your 2weeks course on 5 July**  
(40 teaching hours)

**5 July - 17 July 2020**



*Adiva*  
municipality of Athens

### a. Fall course in Athens (2019 - 2020) (10 days - 40 teaching hours)



**9 - 18 October 2020**

NEOHEL would like to inform you on this year's intensive courses for levels A1, A2, B1, B2, C1 and C2, as defined by CEFR and according to the requirements of ΚΕΓ (Centre for the Greek Language) for the acquisition of the Greek Language Certification (Ellinomatheia). The seminar extends in summer through a 2-week period and in fall through a 10-days period and combines language and culture.

- ❖ Please note that NEOHEL also offers Training seminar for teachers of Modern Greek, Training seminar for teachers of Ancient Greek, Greek culture seminars, as well as Modern Greek courses for children (upon demand).



**Ideal for:** Everyone **with or without Erasmus+** grant.



## SCHEDULE

### Sunday

Arrival & registration

Welcome meeting (20.00 pm) at the venue of the courses

### Monday to Friday

09.15-11.30: Greek Language Lesson

11.30-12.00: Coffee break

12.00-13.45: Greek Language Lesson



### SEMINAR RELATED ACTIVITIES (free of charge):

- Guided tour - Athens sightseeing
- Visit to the National Archaeological Museum

Weekends free for OPTIONAL ACTIVITIES\*

**Participants who fully attend the seminar are awarded a Certificate of Attendance**

*Greek courses are intended for adults of every nationality & language level.*

### \* OPTIONAL ACTIVITIES:

- Visit to the Acropolis & the Acropolis Museum
- Visit to the Benaki Museum the largest private museum in Greece
- Visit to the Cycladic art Museum
- Visit to the Byzantine Museum
- Half day trip to the temple of Poseidon at Cape Sounion
- Half day ride to Glyfada, Voula, Vouliagmeni and Varkiza, an area known as the Athenian Riviera
- Cruise to Saronic islands – Aegina, Hydra, Spetses, Poros
- Trip to Ancient Olympia, birthplace of the Olympic Games (3 hours travelling distance)
- Day trip to Nafplion – Epidaurus
- Athens Festival: performances take place at the ancient theatres of Herodes Atticus (Athens) and of Epidaurus (Peloponnese)
- Visit to Delphi and its famous archaeological museum
- Swimming afternoons: by bus to the Athenian sea shore (from 16:00 to 19:00)
- Evening activities: Dinner at traditional Greek taverns / restaurants, open air performances (concerts, theatre, folklore Greek dances, modern ballet, Greek music & songs concerts, etc.)
- Open air movies

## COURSE FEES

**700 € For the participants with grant\***

**Fees include:** teaching hours, teaching material, and the seminar related activities

**Fees do not include:** Accommodation and meals, travel insurance, airplane or ferry tickets, optional activities.

\* For the participants without grant we offer a **20% fee reduction**. Please contact us at [info@neohel.com](mailto:info@neohel.com)

## ACCOMMODATION

Participants can stay at the **Civitel Attik Hotel** (<https://www.civitelatticl.gr>) and take advantage of the special rates offered to NEOHEL.

	Per person / per day
	<b>Bed &amp; Breakfast</b>
<b>Single room*</b>	<b>80 €</b>
<b>Double room*</b>	<b>45 €</b>
<b>Triple room*</b>	<b>40 €</b>

If you want to book a hotel or apartment in Athens, choose one that is walking distance from the metro station. If it is possible, choose a location close to the Piraeus-Kifissia Green line, so you do not need to change metro line in order to arrive to Civitel Attic Hotel and NEOHEL's offices in Maroussi where the classes take place. (Nerantziotissa station). It takes about 30-40 minutes to reach Maroussi. It depends on if you have to change metro lines.

\* Tax per room & per day: 0.50 - 1€

## Venue of the courses

### Civitel Attik Hotel (4\*) & NEOHEL offices

<https://www.civitelattik.gr/>



Enjoy a lovely holiday at a beautiful Greek location, while enhancing your teaching strategies

Lying in the upscale, attractively green and tranquil suburb of Maroussi, the Civitel Attik Hotel and its new wing, Civitel Esprit, blend harmoniously and discretely with its surroundings, representing an oasis of tranquility in the heart of Northern Athens. Commanding an enviable address in the heart of suburb of Maroussi, Civitel Attik and Esprit are a haven of refined elegance; a complex now re-imagined into a sophisticated urban sanctuary.

Civitel Attik Hotel is situated in a quiet residential area very close to the northern suburbs of Athens (the superb suburb of Kifissia) and is easily accessible by mass transportation.

#### Facilities in the hotel:

- Welcome drink - Free mini bar in the room (water, juice, snack) - Breakfast in the Room (upon request) - Restaurant
- Free Room Service (07:00 - 23:00) - Free Wi-Fi - Elevator
- Relax by the Pool
- Free Use of Sun bed, Parasol and Pool Towel

Carefree moments under the Athenian sun, in a resort within the city. The outdoors seasonal swimming pool of Civitel Attik hotel is surrounded by a beautiful garden and offers endless hours of relaxation and chill-out. The large restaurant veranda overlooking the pool is the ideal spot for a meal or dinner after swimming. Unlimited free Wi-Fi will help you stay online even on your sun bed!

#### USEFUL INFO

Walking distance from metro/train station to Athens, Piraeus, Airport, Kifissia

**30-40 minutes from the city center**

#### DIRECTIONS FROM/TO HOTEL

##### Nearest Airport

Athens International Airport: 27.3km (17miles)

By Car: 21 min | By Train (Suburban Railway): 33 min

Train ticket: 10.00€ | Bus ticket: 6€

##### Nearest Subway

Station: Nerantziotissa

0.6km (0.3miles) | Walking Distance: 7min

##### Nearest Bus Stop

Eptalofou – Ag. Kosmas

0.2km (0.1miles) | Walking Distance: 2min

#### ABOUT MAROUSI

**Marousi** or **Maroussi** (Greek: Μαρούσι, also Αμαρούσιο *Amarousio*) is a suburban city in the northeastern part of the Athens agglomeration, Maroussi dates back to the era of Ancient Athens; its ancient name was Athmonon (Ἄθμονον) and it represented one of the 10 Athenian sub-cities. The area held a main ancient temple, where Amarysia Artemis, the goddess of hunting, was adored, and the city's modern name derives from that of the goddess *Amarysia*, which denotes the origin of the worship in Amarynthos, Euboea. Maroussi is the place of Greek Olympic Sport Center.

The Syngrou Park between Maroussi and Kifissia is an area of 950 acres with narrow footpaths, between fruit trees, pine trees, etc. It is one of the best places for walking, cycling, a small green paradise so close to Athens.



## ATHENS



Acropolis



Olympic Stadium in Maroussi

Athens is the historical capital of Europe, with a long history, dating from the first settlement in the Neolithic age. In the 5th Century BC (the “Golden Age of Pericles”) – the culmination of Athens’ long, fascinating history, the city’s values and civilization acquired a universal significance. Over the years, a multitude of conquerors occupied Athens, and erected unique, splendid monuments - a rare historical palimpsest. In 1834 it became the capital of the Modern Greek State and in two centuries became an attractive modern metropolis with unrivalled charm.

Syntagma and Omonia are the main central squares of the town; they are linked by Stadiou Street and Panepistimiou Avenue, along which some of the town’s most beautiful Neoclassical buildings have been erected. Dominating Syntagma Square is the Greek Parliament and in front of its building stands the Monument of the Unknown Soldier, guarded by the Evzones in traditional costume. From this square starts the beautiful National Garden (40 acres), south of which stands the impressive Zappeion Mansion (1874-1888). From there you can continue towards the Presidential Mansion (1897) and thence to the Panathenaikon (Kallimarmaro) Stadium, where the first Olympic Games in modern history were held in 1896. From there, crossing the Mets neighborhood, the road leads you to the First Cemetery, the oldest one in Athens, basically an outdoor sculpture display with a wealth of wonderful monumental tombstones by some of the most important sculptors of the 19th and 20th centuries. Don’t miss the picturesque Plaka, the oldest neighborhood in Athens and Monastiraki market.

Athens is an ideal destination for every age, lifestyle and budget. Those who wish to explore one of the world’s most ancient cultures will marvel at the city’s archaeological sites and museums. Lovers of contemporary Greek culture and nightlife can experience the vibrant lifestyle, the food, the clubs, the theatres, the modern art, and the concerts in the capital of Greece. In Athens, the old and the new live side by side.



Plaka

## SYLLABUS

### A) LANGUAGE

NEOHEL's approach to language teaching puts emphasis on the acquisition of the everyday language in authentic situations, inside and outside the classroom, in combination with cultural elements and activities.

#### Language & Use of language through stimulating classes:

- Grammar can be fun via communicative practice activities
- Particularities of the Greek grammar
- Improve and develop students' writing
- Dealing with dialogue
- Development of writing and speaking composition skills on various topics of interest
- Teaching with texts: Analysis & interpretation of literary (poetry, prose) & newspaper excerpts
- Language improvement: Idiomatic Greek update using authentic material
- Language improvement: Pronunciation

#### Visual – Audio teaching

- Presenting and practicing language using images as creative stimulus
- Using authentic material: Audio/video listening comprehension
- Interpretation of songs: An important teaching tool in language learning

### B) CULTURE

- Greek life and culture update
- Cross-cultural topics
- Greek on the road
- Greek culture through tavern evenings and interesting lectures



### REGISTER YOUR INTEREST

**Address:** 40, Agiou Konstantinou St., Aethrion building, 15124 Maroussi, Athens, Greece

**Telephone:** +30 210 6198903 (ex. 229), +30 210 6231271, +30 693 6440198

**Fax :** +30 210 6178140

**Email:** [info@neohel.com](mailto:info@neohel.com)

**Website:** [www.neohel.com](http://www.neohel.com)

**The courses are ensured by a qualified team of teachers, researchers and authors, under the direction of Evangelia Georgantzi.**

**Choose the most convenient dates for you.  
Due to the limited availability of rooms, early registration is strongly recommended to ensure your participation to the course.**